

**SOLUTIONS FOR
FLUIDS PUMPING**

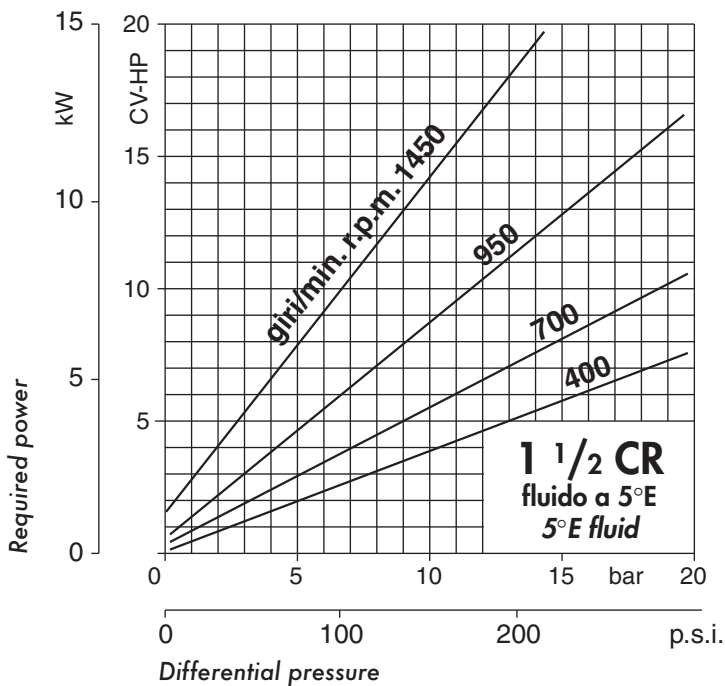
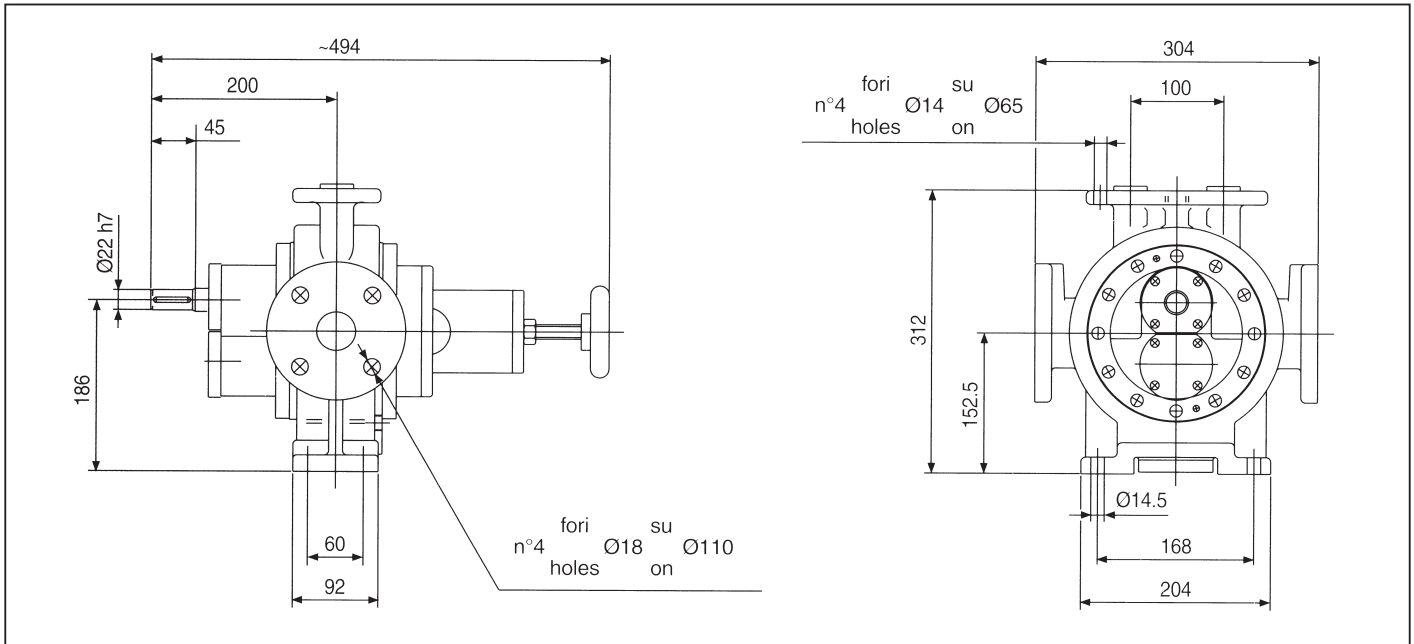
ZRP 1 1/2 CR

Cilindrata: 297 cm³/giro • Displacement: 18,1 cu.in./rev.

Peso: 48 Kg • Weight 106 lb

Flange DN 40 PN 16

The dimension and weights are not mandatory



r.p.m.	Nominal capacity		
	m ³ /h	l/min	g.p.m.
100	1,78	29,7	7.84
200	3,56	59,4	15.7
300	5,34	89,0	23.5
400	7,12	119	31.4
500	8,90	148	39.1
600	10,7	178	47.2
700	12,5	208	54.9
800	14,2	237	62.6
900	16,0	267	70.5
1000	17,8	297	78.4
1100	19,6	326	86.1
1200	21,4	356	94.0
1300	23,2	386	102
1400	24,9	415	110
1500	26,7	445	118