

# ZRP 1 CR

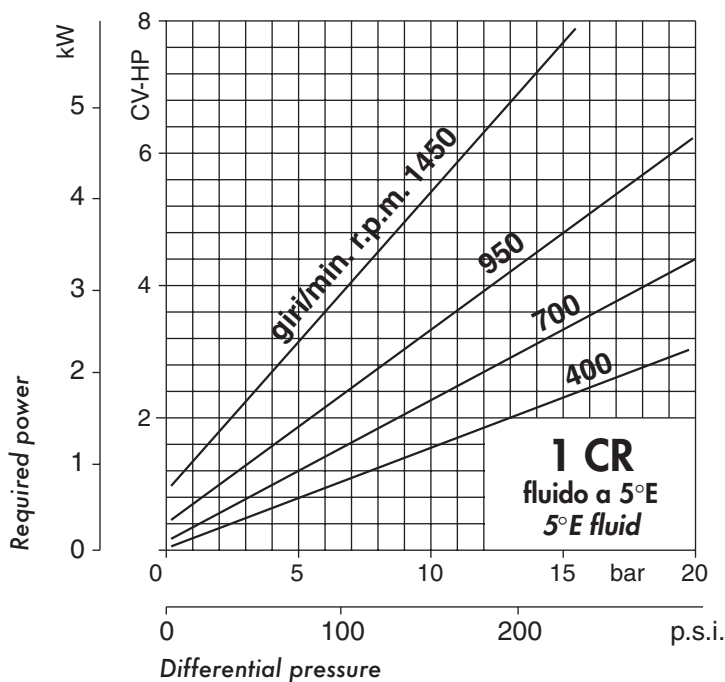
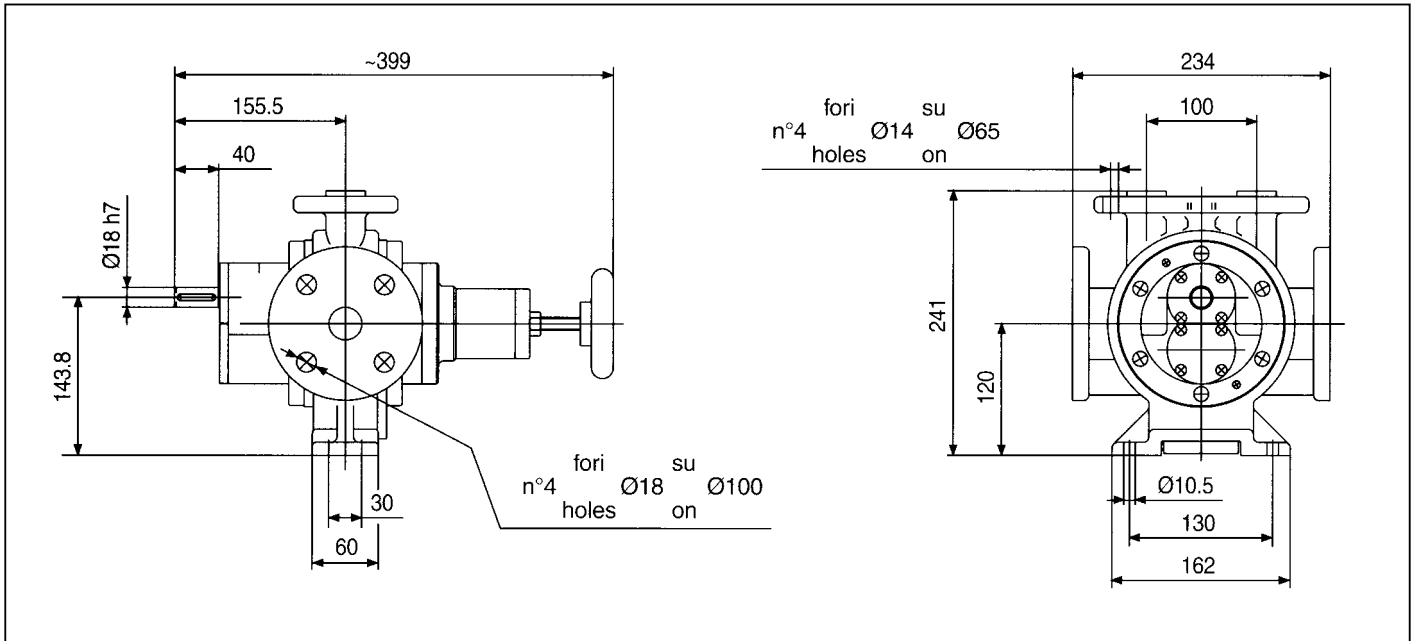
Cilindrata: 127 cm<sup>3</sup>/giro • Displacement: 7,75 cu.in./rev.

Peso: 22 Kg • Weight 48 lb

Flange DN 32 PN 16

**SOLUTIONS FOR  
FLUIDS PUMPING**

The dimension and weights are not mandatory



r.p.m.	Nominal capacity		
	m <sup>3</sup> /h	l/min	g.p.m.
100	0,76	12,7	3.35
200	1,53	25,5	6.74
300	2,29	38,2	10.1
400	3,06	50,9	13.4
500	3,82	63,7	16.8
600	4,58	76,5	20.2
700	5,35	89,1	23.5
800	6,11	102	26.9
900	6,88	115	30.4
1000	7,64	127	33.5
1100	8,40	140	37.0
1200	9,17	153	40.4
1300	9,93	166	43.8
1400	10,7	178	47.0
1500	11,4	190	50.2